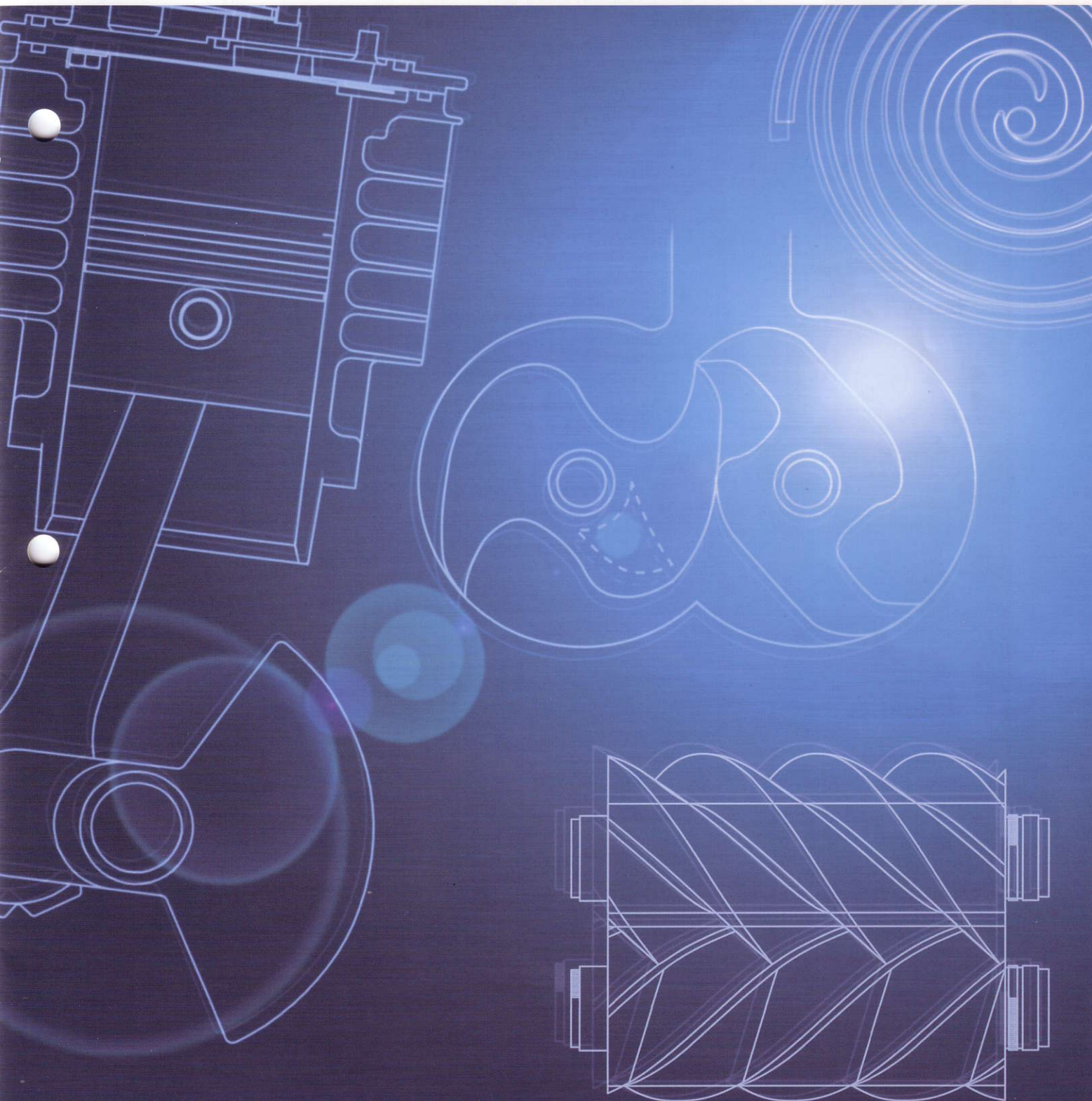


AIR COMPRESSOR

(0.2~30kW)

Oil-lubricated reciprocating type	0.75~11kW
Oil-free reciprocating type	0.2~11kW
Oil-free scroll type	0.75~30kW



Reciprocating Air Compressor

Your powerful partner.

Oil-free reciprocating air compressor



TFP04-10



TFP75-10

OIL FREE

Long life

- No lubricating oil is required as our unique composite resin piston has a self-lubricating feature. It has excellent durability and you can enjoy its oil-free advantages for a long period of time without trouble.
- Extended cooling efficiency through a two-way cooling system (2.2kW and above) eliminates troubles caused by excess heat.
- Large capacity intake filter.

Clean

- No oil in compressed air or drain. Improves your product quality and maintains a clean working environment. It is an environment friendly unit.

Powerful

- Two-stage compression (5.5kW and above).
- Tank-mounted units are up to 1.0MPa and packaged type are up to 0.85MPa.
- 1.4MPa packaged models (5.5kW and above) are also available.

Safe

- Includes fully covered belt cover for all tank-mounted models.
- TEFC (totally enclosed fan cooled) motor is standard to prevent troubles from dust and moisture (except TFP-02/04).
- Anti-dust filter kit is standard to protect the internal components (5.5kW and above).

※ Built-in air dryer models are available for all packaged models.



CFP110B-14D

Oil-lubricated reciprocating air compressor



TLP55B-10

Our COMG oil lubricated reciprocating air compressors outperform competing models in durability, safety and versatility, on top of their basic performance.

- The TEFC motor is standard to prevent troubles from dust and moisture.
- All the tank-mounted models have a fully covered belt cover for safety.
- Two-way cooling system ensures effective cooling of heat generated by compression (2.2kW and above).
- Auto start-stop pressure switch (all-tank mounted models and packaged 1.5~7.5kW models).
- Manual dual control (for packaged 11kW model) enables you to select the most suitable control system for your application.

※ When the air compressor is used intermittently, we recommend use of a water separator kit which is available as an optional part for 1.4MPa models from 2.2 to 11kW.

※ Built-in air dryer models are available for all packaged models.



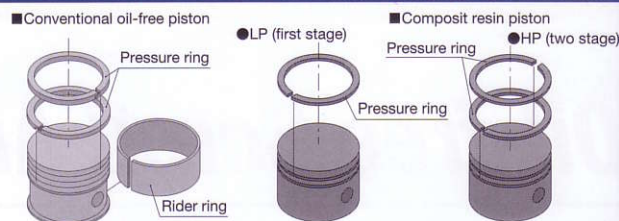
CLP37C-8.5D

COMG Series / Tank-mounted type

Type	Motor rated output kW[PS]	Control pressure MPa	Air delivery L/min	Air receiver L	Air outlet B	External dimensions (W×L×H) (mm)	Mass (kg)	Noise level (Front1.5m) dB(A)	Operational control	Oil alarm	Voltage
TLPC07-10	0.75(1)	0.8~1.0	75	39	G ¼×1 Ball cock	760×350×690	48	69	Pressure switch	—	Three phase
TLP15-10	1.5(2)		165	70		1065×385×800	74				
TLP22B-10	2.2(3)		255	80	G ¼×2 Ball cock	1200×425×840	94	70		Optional (POA-225)	
TLP37B-10	3.7(5)		400	120		1400×450×955	133	73			
TLP55B-10	5.5(7.5)		630	165	1430×530×1040	186	72				
TLP75B-10	7.5(10)	1.15~1.4	855	220	Rc ¾×1 Ball valve G ¼×1 Ball cock	1500×580×1110	235	74		Optional (POA-223)	
TLP110B-10	11(15)		1285	250		1685×660×1110	288	77			
TLP22B-14	2.2(3)		235	165		1430×475×990	140	67		Optional (POA-225)	
TLP37B-14	3.7(5)		390			1500×500×1030	170	71			
TLP55B-14	5.5(7.5)		590	220		1500×550×1080	205	72		Optional (POA-223)	
TLP75B-14	7.5(10)		755			1500×580×1110	235	74			
TLP110B-14	11(15)		1125	250		1685×660×1110	285	77			

The composite resin piston

The composite resin piston is made from a heat resistant and thermosetting resin. It has excellent anti-wear characteristics and can endure continuous use under high temperatures. It eliminated the need for a rider ring, which is essential to conventional oil-free air compressors. This means you are free from seizure or galling, often found in the rider ring mechanism. The compression ring is made from Teflon resin which has high heat and anti-wear resistance properties.



COMG Series / Tank-mount type

Type	Motor rated output kW{PS}	Control pressure MPa	Air delivery L/min	Air receiver L	Air outlet B	External dimensions (W×L×H) (mm)	Mass (kg)	Noise level (Front1.5m) dB(A)	Operational control	Voltage
TFP02-10	0.2{1/4}	0.8~1.0	15/17	20	G ¼×1 Ball cock	460×300×600	23	64	Pressure switch	Single phase
TFP04-10	0.4{1/2}		35/40			460×300×630	25		Unloader	
TFU07-7	0.75{1}	0.55~0.7	97	50		800×375×735	Three phase 52 Single phase 56	71	Pressure switch	Three phase
TFPC07-10			75	39		770×350×675	Three phase 48 Single phase 52			
TFP07-10		0.8~1.0		50		800×375×705	Three phase 52 Single phase 56			
TFP15-10		1.5{2}	160	70		1065×385×800	74			
TFP22B-10	2.2{3}	235	80	G ¼×2 Ball cock	1200×425×840	94				
TFP37B-10	3.7{5}	370	120	Rc ¾×1 Stop valve	1400×450×955	139				
TFP55-10	5.5{7.5}	580	165	G ¼×1 Ball cock	1430×530×1040	184				
TFP75-10	7.5{10}	825	220		1500×580×1110	237	76			
TFP110-10	11{15}	1200	250		1685×660×1110	288	79			

COMGPAC Series / Packaged type

	Type	Motor rated output kW{PS}	Control pressure MPa	Air delivery L/min	Air receiver L	Air outlet B	Air dryer		External dimensions (W×L×H) (mm)	Mass (kg)	Noise level (Front1.5m) dB(A)	Operational control	Voltage				
							Pressure dew point℃	Refrigerant									
w/o built-in air dryer	CFP07C-8.5	0.75{1}	0.7~0.85	80	25	G 1/4×1 Ball cock	-	-	625×540×760	66	52	Pressure switch	Single phase Three phase				
	CFP15C-8.5	1.5{2}		160					693×585×840	86	55						
	CFP22C-8.5	2.2{3}		260	RC 3/8×1 Ball valve	39			890×655×985	136	53						
	CFP37C-8.5	3.7{5}		375						140							
	CFP55B-8.5	5.5{7.5}		565	RC 3/4×1 Ball valve	70			1170×745×1100	245	56						
	CFP75B-8.5	7.5{10}		825					305								
	CFP110B-8.5	11{15}		1140					75	1230×870×1115	340	59	Manual-dual				
	w/ built-in air dryer	CFP07C-8.5D		0.75{1}	1.15~1.4	70			25	G 1/4×1 Ball cock	15 or below	HFC 134a	625×540×760	68	52	Pressure switch	Single phase Three phase
		CFP15C-8.5D		1.5{2}		160							693×585×1000	105	55		
CFP22C-8.5D		2.2{3}	260	RC 3/8×1 Ball valve		39	890×655×1120	152	53								
CFP37C-8.5D		3.7{5}	375				890×655×1200	170	56								
CFP55B-8.5D		5.5{7.5}	565	RC 3/4×1 Ball valve		70	1170×745×1200	320									
CFP75B-8.5D		7.5{10}	825				1230×870×1495	380									
CFP110B-8.5D		11{15}	1140				75	415	59	Manual-dual							
CFP55B-14D		5.5{7.5}	540	70		1170×745×1480	320	57	Pressure switch								
CFP75B-14D		7.5{10}	725				380										
CFP110B-14D		11{15}	1055			75	1230×870×1495	415	60	Manual-dual							

COMGPAC Series / Packaged type

Type	Motor rated output kW{PS}	Control pressure MPa	Air delivery L/min	Air receiver L	Air outlet B	Air dryer		External dimensions (W×L×H) (mm)	Mass (kg)	Noise level (Front1.5m) dB(A)	Operational control	Oil alarm	Voltage	
						Pressure dew point℃	Refrigerant							
w/o built-in air dryer	CLP15C-8.5	1.5{2}	165	25	G ³ / ₄ ×1 Ball cock	-	-	693×585×840	86	53	Pressure switch	Standard equipment	Three phase	
	CLP22C-8.5	2.2{3}	275	39	Rc ³ / ₈ ×1 Ball valve			890×655×985	136	51				
	CLP37C-8.5	3.7{5}	415	70	Rc ³ / ₄ ×1 Ball valve			1170×745×1100	245	56				
	CLP55B-8.5	5.5{7.5}	605					1230×870×1115	305					
	CLP75B-8.5	7.5{10}	845	340	59			Manual-dual						
	CLP110B-8.5	11{15}	1215	75	890×655×985			141	51	Pressure switch				
	CLP22C-14	2.2{3}	235	39	Rc ³ / ₈ ×1 Ball valve			1170×745×1100	245		56			
	CLP37C-14	3.7{5}	390	70	Rc ³ / ₄ ×1 Ball valve			1230×870×1115	305		59			Manual-dual
	CLP55B-14	5.5{7.5}	570					340	59					
	CLP75B-14	7.5{10}	740	1075	75									
w/ built-in air dryer	CLP15C-8.5D	1.5{2}	165	25	G ³ / ₄ ×1 Ball cock	15 or below	HFC 134a	693×585×1000	105	53	Pressure switch			
	CLP22C-8.5D	2.2{3}	275	39	Rc ³ / ₈ ×1 Ball valve			890×655×1120	152	51				
	CLP37C-8.5D	3.7{5}	415	70	Rc ³ / ₄ ×1 Ball valve			890×655×1200	175	54				
	CLP55B-8.5D	5.5{7.5}	605					1170×745×1480	320	56				
	CLP75B-8.5D	7.5{10}	845	1230×870×1495	380			Manual-dual						
	CLP110B-8.5D	11{15}	1215	75	415				59					
	CLP22C-14D	2.2{3}	235	39	Rc ³ / ₈ ×1 Ball valve				890×655×1200	165	51			Pressure switch
	CLP37C-14D	3.7{5}	390	70	Rc ³ / ₄ ×1 Ball valve		1170×745×1480	320	56					
	CLP55B-14D	5.5{7.5}	570				1230×870×1495	380	Manual-dual					
	CLP75B-14D	7.5{10}	740	415	59									
	CLP110B-14D	11{15}	1075	75										

●Air delivery is discharged air volume converted into atmospheric pressure. If you need guaranteed value, please contact us.
●Noise level is measured in an anechoic room at full load operation.

Oil-free Scroll Air Compressor

Clean and quiet. The best selling Oil-free air compressor!

Only the oil-free scroll mechanism is this clean and silent.



**Oilfree Scroll
SmartAir®**

High quality air.

- Delivered air does not contain any oil and is suitable for all applications where oil-free air is essential.

Reliability & durability

- Simple compression mechanism and setup of the unit assure reliable and durable operation.
- Daily oil maintenance is no longer needed.

Low noise and vibration

- Oil-free scroll mechanism has very small torque fluctuation as well as low noise and vibration. It can be installed inside the factory where air is needed without causing any discomfort in the surrounding environment.
- Noise from 0.75 or 1.5kW package is only 45dB, same as in the quiet library. You may not even notice it working.

Compactness

- 1.5 and 2.2kW packages have a foot print the size of a newspaper.



**Oilfree Scroll
ThinkAir®**

1. Environmentally friendly

Oil-free

- Our SLP Series does not use oil or water for lubrication and therefore no oil is discharged in compressed air or in drain. No extra cost is needed to treat drain or lubricating water.

Multiple unit control – high energy saving control system

- It produces necessary amount of air with minimum energy usage.

Low noise and vibration

- Noise is very low. With our 5.5kW unit, it is 52dB and even with our 30kW unit, it is only 60dB. It can be installed inside the factory where compressed air is needed without bothering the people around it.

2. Backup function

Offsetting no air risk

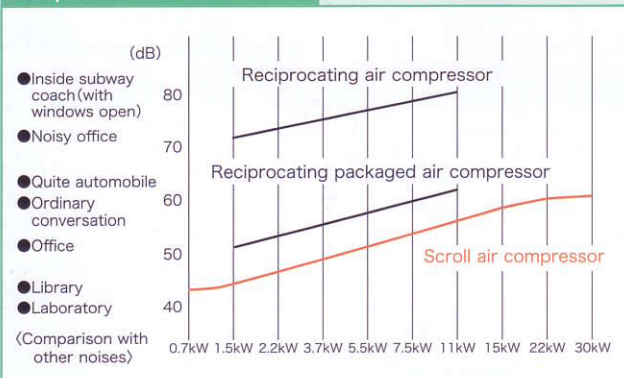
- When one air end stops by some reason, other air ends back it up to prevent no air supply situation.

3. Work load adjusted maintenance program

More realistic maintenance

- Most of the air compressors count their unloading operation to determine their maintenance period, however, our SLP Series count on loading operation time only which is more realistic and help extending maintenance period.

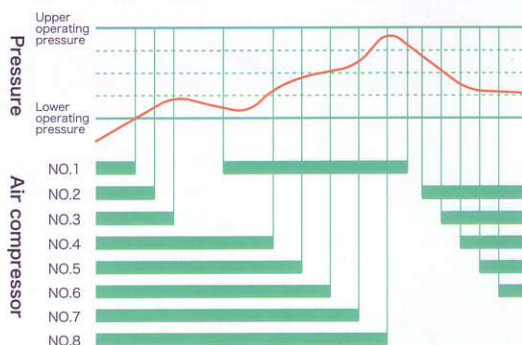
Comparison with other noises



Multiple unit control

Our Think Air Series has multiple air ends in the package (2 units for 5.5kW Model and 8 units for 30kW Model). SLP Series produces the necessary amount of compressed air with minimum number of air ends. This Mechanism works best as air demands fluctuates during working hours and thus saves energy.

Operating sequence of the multiple unit control





SLP-07ED
(with membrane air dryer)



Aluminum air receiver
(for 0.75kW Model, its inside is anti-rust coated)



SLP-15EBD
(with refrigerated air dryer)

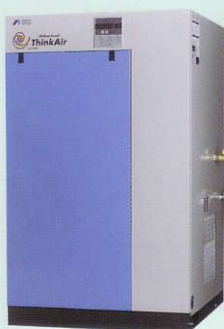


Stainless steel air receiver
(for 1.5, 2.2 & 3.7kW Models)

Oil-free Scroll Air Compressors

Type		Motor rated output kW	Operation control	Control pressure MPa	Air delivery L/min	Air receiver L	Air outlet B	Air dryer		External dimensions (W×L×H) (mm)	Mass (kg)	Noise level (Front1.5m) dB(A)	Voltage
								Pressure dew point °C	Refrigerant				
w/o built-in air dryer	SLP-07E	0.75	Auto start-stop [Pressure sensor detection]	0.6~0.8	74	5	G¼	—	—	355×590×690	50	45	Single phase Three phase
	SLP-15EB	1.5		165	20	Rc¾	453×507×875			84	49		Three phase
	SLP-22EB	2.2		250	20		545×622×1058			92			
SLP-37EB	3.7	410		35	15 or below	Membrane type HFC 407C	355×590×690			134	45	Single phase Three phase	
SLP-07ED	0.75	64		5			52						
SLP-15EBD	1.5	165		20			G¼	453×682×875	110	49	Three phase		
SLP-22EBD	2.2	250		20			Rc¾	118					
SLP-37EBD	3.7	410		35	151								
1MPa model													
w/ built-in air dryer	SLP-151EBD	1.5	Auto start-stop [Pressure sensor detection]	0.8~1.0	130	20	G¼	15 or below	HFC 407C	453×682×875	110	46	Three phase
	SLP-221EBD	2.2			215	20	Rc¾			545×622×1058	118	50	
	SLP-371EBD	3.7			345	35				151			

※For 1.0MPa models, without built-in air dryer types are available.



SLP-150EBD



SLP-220E



SLP-300E

Oil-free Scroll Air Compressors

Type		Motor rated output kW	Operation control	Control pressure MPa	Air delivery L/min	Air receiver L	Air outlet B	Air dryer		External dimensions (W×L×H) (mm)	Mass (kg)	Noise level (Front1.5m) dB(A)	Voltage	
								Pressure dew point °C	Refrigerant					
w/o built-in air dryer	SLP-55EB	2.2+3.7	Multiple units control	0.65~0.8	670	SAT-120C-140	Rc¾	—	—	650×955×1195	245	52	Three phase	
	SLP-75EB	3.7×2			835	SAT-120C-140					260	53		
	SLP-110EB	3.7×3			1255	SAT-220C-140	Rc1				650×955×1555	330		56
	SLP-150EB	3.7×4			1670	SAT-220C-140						425		58
	SLP-220E	3.7×6		0.6~0.7	2700	SAT-400C-140	Rc1 ½			1370×955×1555		725		58
SLP-300E	3.7×8	3600	SAT-600C-100		860	59								
w/ built-in air dryer	SLP-55EBD	2.2+3.7	Auto start-stop [Pressure sensor detection]	0.65~0.8	670	SAT-120C-140	12 or below	HFC 134a	650×955×1195		295	52		
	SLP-75EBD	3.7×2			835	SAT-120C-140					Rc¾	310		53
	SLP-110EBD	3.7×3			1255	SAT-220C-140				Rc1	650×955×1555	412		56
	SLP-150EBD	3.7×4			1670	SAT-220C-140						520		58
	SLP-220ED	3.7×6		0.6~0.7	2700	SAT-400C-140			Rc1	1370×955×1555		825		59
1MPa model														
w/ built-in air dryer	SLP-551EBD	2.2+3.7	Multiple units control	0.8~1.0	560	SAT-120C-140	12 or below	HFC 134a	650×955×1195	295	52	Three phase		
	SLP-751EBD	3.7×2			690	SAT-120C-140				Rc¾	310		53	
	SLP-1101EBD	3.7×3			1035	SAT-220C-140				Rc1	650×955×1555		410	56
	SLP-1501EBD	3.7×4			1380	SAT-220C-140							520	58
	SLP-2201ED	3.7×6		0.6~0.7	2070	SAT-400C-140			Rc1 ½	1370×955×1555			825	59
SLP-3001E	3.7×8	2760	SAT-600C-100		860									

Air delivery is discharged air volume converted into atmospheric pressure. Ask for a guaranteed value if needed.
The air receiver is the standard accessory for Smart Air Series, however, an auxiliary receiver may be needed depending on your usage.
The air receiver is not a standard accessory for Think Air Series. We recommend installing one according to your usage.
Noise level is measured in an anechoic room. Noise level of the built-in air dryer type is higher by 1dB than corresponding types without air dryer.
Outlet air dew point is dew point temperature under pressure.

Booster Compressor

Tough and quiet. Three Series are available.

BOOSTER Compressor

Oil-free reciprocating booster compressor

TFBS Series Small Oil-free Booster Compressor

TFBS04-8.5

The World's first small-size Oil-free booster compressor.
For: Partial boost of air pressure at usage points to replace the booster valves.
Provides a small boost of inactive gases such as nitrogen gas.

- Employs an inner compression system to prevent leakage of gas.
- Has a long maintenance cycle, 10,000 operating hours before maintenance is required.



TFBS Series Small Oil-free Booster Compressor

Type	Motor rated output kW	Operation control	Control pressure MPa	Air delivery L/min(50Hz/60Hz)	Air receiver L	Air inlet B	Air outlet B	External dimensions (W×L×H) (mm)	Mass (kg)	Noise level(Front1.5m) dB(A) (50Hz/60Hz)	Voltage
TFBS04-8.5	0.4	Pressure switch	0.65~0.85	185/220	20	Rc $\frac{3}{8}$ ×1	Rc $\frac{3}{8}$ ×1 Ball valve	460×305×615	28	63/64	Three phase
TFBS07-8.5	0.75			295/335	39			775×330×660	45	66/67	

※1. Air delivery is discharged air volume converted to atmospheric pressure at 0.4MPa intake and 0.85MPa exhaust pressure. ※2. If intake air/gas pressure is more than 0.4MPa, reduce to 0.4MPa or less with the pressure regulator. ※3. Air/gas supplied to the unit must be free from oil or moisture. ※4. Noise is measured in an anechoic room 1.5M front of the unit. ※5. It is directly coupled with the motor and specifications differ according to 50 or 60Hz. ※6. Do not install where atmosphere is corrosive. ※7. The air filter with 5 μ m element is the standard accessory.

CFBS Series Oil-free Booster Compressor

CFBS55-14

The world's first oil-free booster compressor.
For: Boosting up air pressure
Boosting up nitrogen gas pressure

- It is a quiet packaged type with a reservoir tank.
- Long maintenance cycle, 10,000 operating hours or 4 years.
- Maximum air/gas pressure is 1.4MPa, and it is versatile.



CFBS Series Oil-free Booster Compressor

Type	Motor rated output kW(PS)	Operation control	Pressure range, intake air/gas	Control pressure MPa		Air delivery L/min	Air receiver L	Air inlet B	Air outlet B	External dimensions (W×L×H) (mm)	Mass (kg)	Noise level (Front1.5m) dB(A)	Voltage
				Preset	Adjustable range								
CFBS37-14	3.7(5)	Computer assisted dual control	0.2~0.5	1.2~1.4	Upper pressure 1.4 ~Lower pressure +0.15 or more Lower pressure Intake air/gas pressure +0.2 or more	1080	70	Rc3⁄4×1 Ball valve	Rc3⁄4×1 Ball valve	1180×750×1100	215	55	Three phase
CFBS55-14	5.5(7.5)				1750	235					56		

※1. Air delivery is discharged air volume converted to atmospheric pressure at 0.5MPa intake and 1.4MPa exhaust pressure. ※2. If intake air/gas pressure is more than 0.5MPa, reduce to 0.5MPa or less with the pressure regulator. ※3. Air/gas supplied to the unit must be free from oil or moisture. Install the reservoir tank with 80 liter or more to prevent them. (The tank is optional) ※4. Noise is measured in an anechoic room 1.5M front of the unit at full load. ※5. Do not install where atmosphere is corrosive. ※6. The main line filter with 5 μ m element is the standard accessory.

BOOSTER Compressor

CLBS Series Oil Lubricated Booster Compressor

Oil-lubricated reciprocating booster compressor

It boosts air/gas pressure to 3.0MPa
For: Laser beam machining,
Blow molding, etc.

- It is a quiet packaged type with a reservoir tank.
- It can be used with wide range of air/gas pressure.
- External signal data input/output is available as an optional part.

CLBS55-30



CLBS Series Oil Lubricated Booster Compressor

Type	Motor rated output kW(PS)	Operation control	Pressure range, intake air/gas	Control pressure MPa		Air delivery L/min	Air receiver L	Air inlet B	Air outlet B	External dimensions (W×L×H) (mm)	Mass (kg)	Noise level (Front1.5m) dB(A)	Voltage
				Preset	Adjustable range								
CLB55S-30	5.5(7.5)	Computer assisted dual control	0.5~1.0	2.8~3.0	Upper pressure 3.0 ~Lower pressure +0.2 or more Lower pressure Intake air/gas pressure +0.2 or more	1300	70	Rc3/4×1 Ball valve	Rc3/4×1 Ball valve	1230×870×1115	340	56	Three phase
CLB57S-30	7.5(10)				2100	375							

※1. Air delivery is discharged air volume converted to atmospheric pressure at 1.0MPa intake and 3.0MPa exhaust pressure. ※2. If intake air/gas pressure is more than 1.0MPa, reduce to 1.0MPa or less with the pressure regulator. ※3. Air/gas supplied to the unit must be free from oil or moisture. Install the reservoir tank with 80 liter or more to prevent them. (The tank is optional) ※4. Noise is measured in an anechoic room 1.5M front of the unit at full load. ※5. Do not install where atmosphere is corrosive. ※6. The main line air filter with 5 μ m element is the standard feature.

Nitrogen Gas Generator



PSA type Nitrogen Gas Generator

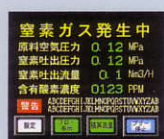
Simple operation and quiet.

It extracts nitrogen gas from atmosphere and reduces costs. You don't need to change the cylinders. It is easy to operate.

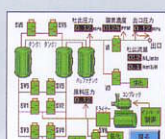
Nitrogen Gas Generator

1 Easy operation with touch panel screen (except 0.75kW)

All important information such as operating condition, troubles, maintenance, etc. are displayed on the panel. Through the panel You can input specific requirements, such as outlet nitrogen gas purity and pressure and automatic timed operations.



Panel display
(normal operation mode)



Panel display
(flow display mode)

2 Compact and space saving (0.75~15kW)

As the air compressor is built in, installation and operation are easy.

3 The built-in air compressor is the oil-free scroll type and you have oil-free advantages as well as low noise and vibration.



NP-22B

NP Series, with built-in oil-free scroll air compressor, PSA type

Type	Built-in air compressor kW	Purity %			Exhaust pressure MPa		External dimensions (W×L×H) (mm)	Mass (kg)	Power source		
		Type M	Type H	Type SH					Voltage	Power consumption kW	
		99	99.9	99.99	Delivery volume Nm/h						
NPK-07	0.75	1.3	0.8	0.4	0.4	0.5	480×730×1150	120	Single phase	1.2	
NP-15B	1.5	3.3	2.1	1.2			860×600×1420	300		2.5	
NP-22B	2.2	5.2	3.4	2.0				320		4.0	
NP-37B	3.7	8.5	5.5	3.3				1005×775×1660		420	6.1
NP-55B	5.9	13.0	8.5	5.2				1355×960×1700		650	9.0
NP-75B	7.4	16.5	10.5	6.6						750	10.3
NP-110	11.1	26.0	16.5	10.0						1700×1230×1825	2000
NP-150	14.8	34.0	22.0	13.0				2100×1280×1950		2300	19.0

※1. Purity of gas is N₂ (nitrogen gas) + Ar (argon gas).

※2. Nitrogen gas delivery is when our air compressor is used.

※3. Delivery of nitrogen gas occurs when the generator is used at ambient temperature of 20°C and relative humidity is at 60%.

Nitrogen gas is converted to 0°C ambient temperature and at atmospheric pressure.

※4. NPK-07 has an instrument panel. Both single phase and three phase models are available.

NPS Series, without built-in air compressor, PSA type

Type	Purity %			Exhaust pressure MPa		External dimensions (W×L×H) (mm)	Mass (kg)	Power source		Material air	
	Type M	Type H	Type SH					Voltage	Power consumption kW	Air volume m³/min (Supply pressure 0.95MPa)	
	99	99.9	99.99	Type M	Type H/SH						
	Delivery volume Nm³/h			Type M	Type H/SH					Type M	Type H/SH
NPS-110B	25	18	15	0.4	0.5	900×1130×1950	900	Single phase	0.5	1.4	
NPS-150B	40	30	20			980	2.2			2.1	
NPS-220B	50	35	25			1000×1230×2150	1300			4.6	3.2
NPS-300B	90	60	40			1750×1050×1925	2200			5.7	4.6
NPS-370B	110	80	50			1900×1100×2100	2500			7.0	5.7
NPS-450B	130	100	60			2200×1230×2275	2800			8.8	7.0
NPS-550B	160	120	80			2200×1230×2500	3600			12.3	8.8
NPS-750B	200	140	100			2550×1430×2500	4000			14.0	12.3

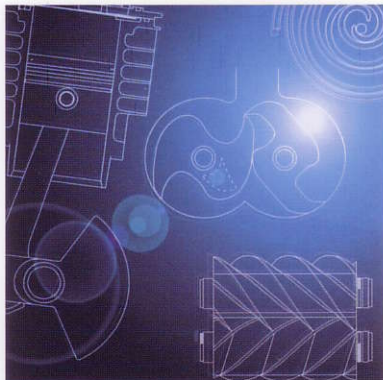
※1. Purity of gas is N₂ (nitrogen gas) + Ar (argon gas).

※2. Nitrogen gas delivery is when our air compressor is used.

※3. Delivery of nitrogen gas occurs when the generator is used at ambient temperature of 20°C and relative humidity is at 60%.

Nitrogen gas is converted to 0°C ambient temperature and at atmospheric pressure.

※4. NPK-07 has an instrument panel. Both single phase and three phase models are available.



Safety precautions

- Use air compressors in this catalog for air only. (Uses other than air can cause fire, damage, etc.)
- Never use respiratory equipment which directly sucks compressed air. (If done, it can cause serious injury.)



As we continuously develop and improve our products, models, specifications and photos are subject to change without notice.



ANEST IWATA Corporation

3176, Shinyoshida-cho, Kohoku-ku,
Yokohama 223-8501, Japan
Tel: 045-591-1122 Fax: 045-593-0524
<http://www.anest-iwata.co.jp/>